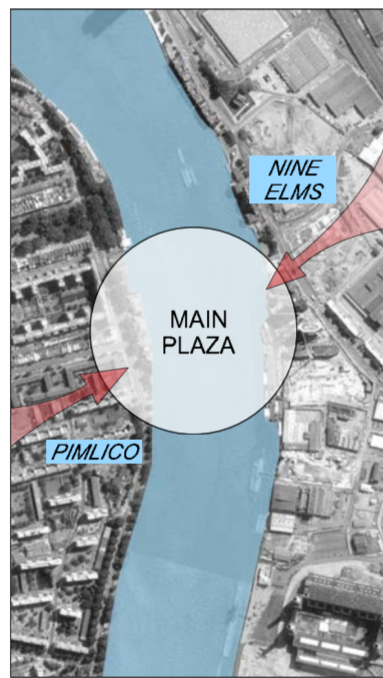




### 1. Bridge as a Plaza

We would like to propose a plaza that floats in the air above the Thames. It is a simple-shaped new type of plaza that can accommodate any manner of activities. The new plaza rises upon the Thames, as if it were a beautiful rainbow creating a scenic appearance in the sky. We are specifically planning a stair-like bridge that widely forms an elegant circular arch both in its plan and in its elevation. There are no supporting columns in this bridge. None of the structure will be built in the river, and its beautiful curvature passes straight through above the Thames. Its demeanor is like that of a rainbow that stretches across the river. It will serve not only as a means of transportation, but will also inhabit the role of a plaza as a space where people can spend their day sitting and gazing at the river. In this pleasant space, people who cross the Thames upon their journey will intermingle with people who remain there in a relaxed manner. As well as fulfilling its role as a bridge, RAINBOW PLACE will be a main plaza for this area that is undergoing a process of renewal.



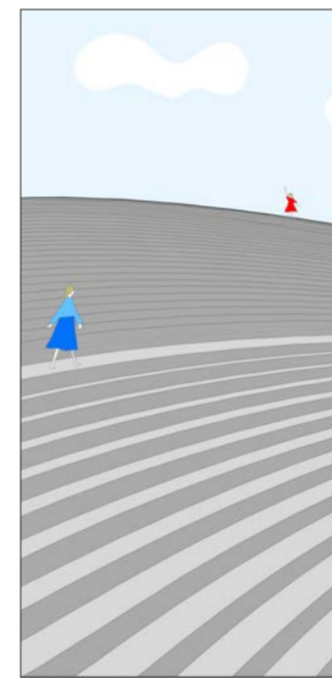
### 2. Bridge as a Theatre

In creating a stair-like space that draws an arch like a rainbow, we expect to achieve a centripetal effect akin to an open-air theatre whilst simultaneously leading people's eyes and their interest to the flow of the Thames. In this respect, this place embodies a multitude of possibilities for holding various events. For instance, when an art festival takes place on the Thames, this space can become a large theatre through closing off the traffic of cyclists. In the summer it is transformed into a circular plaza through the setting up of a temporary fountain, and people can enjoy the refreshing splash of the water. Additionally, it will also be possible to host an array of performances on the bridge. A new and active vibrancy that is rarely evident within bridges in general is conceived on each of its landing points in the form of establishments such as the likes of coffee shops and retail stalls for people visiting the bridge.



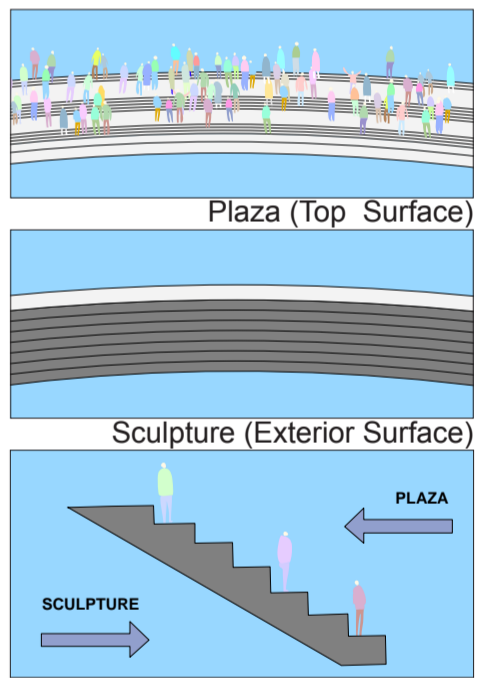
### 3. Bridge as a Landscape

The bridge will create a landscape like a gradual hill upon the Thames by its form that curves both two-dimensionally and three-dimensionally as well as through the vertical intervals of the stairs. On the contrary to existing bridges that merely show the upstream and downstream of the river at the same time, in RAINBOW PLACE people can witness the distant view to one side that seemingly reveals itself as one gradually ascends the stairs. Furthermore, when people reach the top, an epic view unravels before the eyes on the other side of the bridge, giving the same spectacular sensation of reaching the peak of a mountain. This bridge enables people to see the view of London from different levels, and we believe that it will further inhabit the role of an observatory that hovers above the Thames.

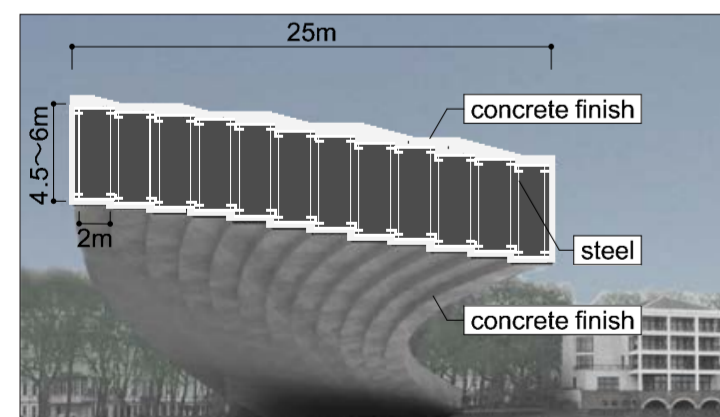


### 4. Bridge as a Sculpture

The tilted arch serves to create two distinct impressions of this bridge within the scenery. On the one side it reveals its impression as a plaza in which people sitting and gathering around the stairs can be seen. From the other side, the people gathered in the space are concealed and cannot be seen. Only the opposite exterior surface of the bridge can be seen, presenting the appearance of a beautiful sculpture that draws a rainbow-like dynamic arch across the river. Moreover, the rainbow sculpture which is reflected upon the wavering surface of the water changes its expression throughout each and every moment and it is almost like a real rainbow that appears amidst the sky. RAINBOW PLACE is a beautiful scenery that is conceived through an elegant rainbow-like curvature and the current of the river Thames. At times, a riverboat will transition under the bridge as if passing through the gate of rainbow. Through the numerous overlaying of such elements, we believe that RAINBOW PLACE will be a new monument of London in its own right whilst simultaneously integrating itself into the beautiful, historical view of the Thames riverside.



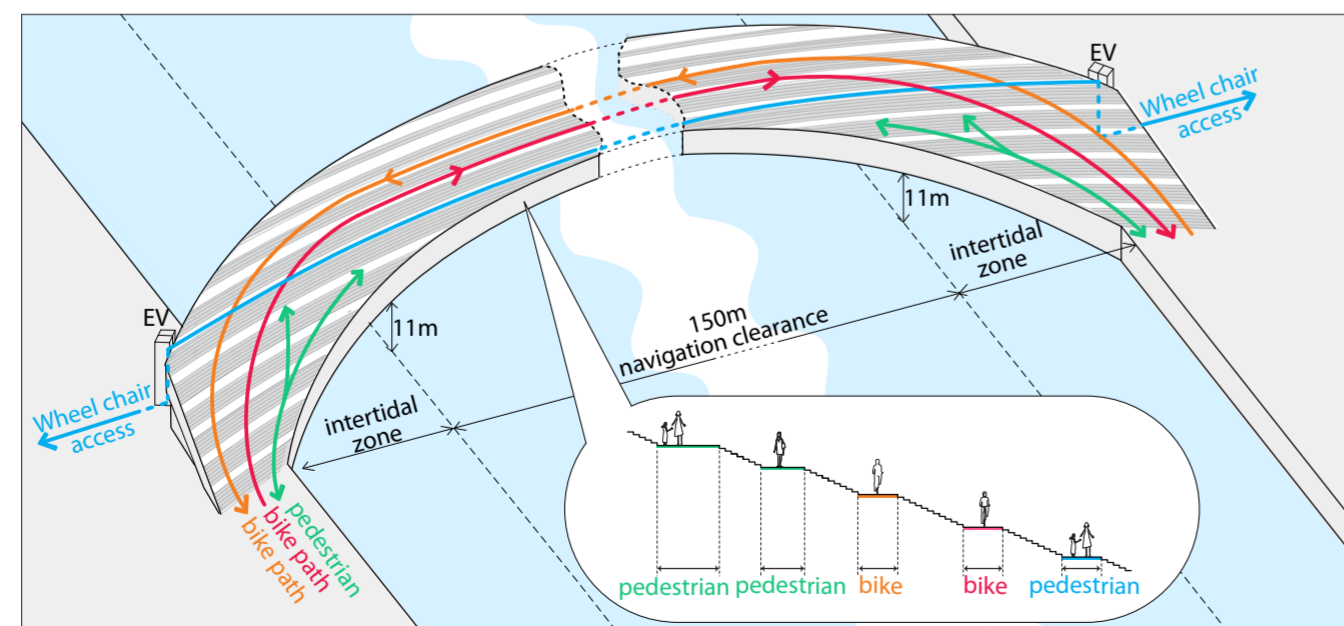
### Structure Concept



We span the bridge with simple arch beams. The steel structure member with concrete finishing can achieve the light weight of the whole bridge. The both ends of the beams are haunched at the connections to the river walls, reducing the flexibility of the bridge. The arched beams will be connected in a stepped manner, creating a stair-like structure. As a whole, this simple and clear structure acts as an efficient curved surface achieving the big depth of the beams in the cross section. This will further reduce the deformation and enhance the rigidity of the whole structure.

Challenge 2: Structural concept with no column for dimensional and inherent concerns.

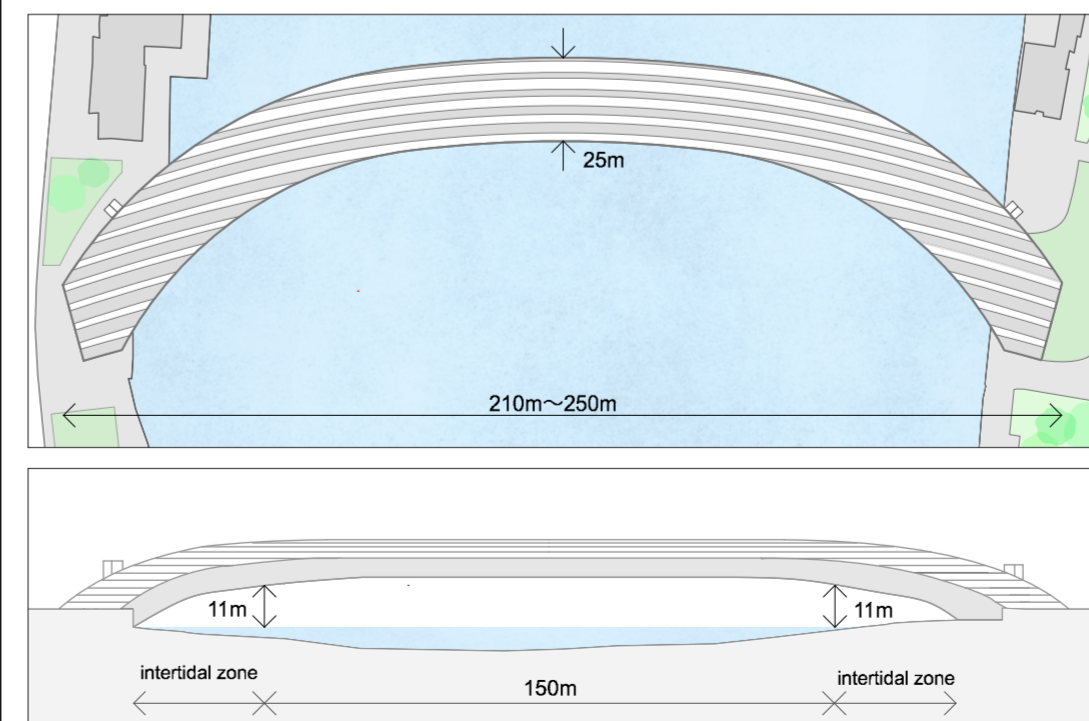
### Approach and Circulation



The circulation system can be easily organized for bicyclists and pedestrians at the wider surfaces of the strips, while providing the recreation areas in between at the areas of the smaller strips. At the same time, the bridge can also flexibly adopt to many special occasions. For example, the bike access to the bridge can be limited, to hold a big event at the big spread of the place.

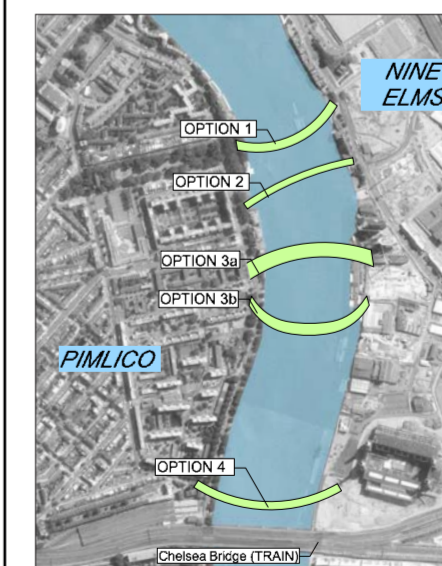
Challenge 1: Integrated and flexible transport strategy and recreation place  
Challenge 4: Approaching, crossing and leaving the bridge

### Plan and Elevation



Challenge 2: The navigation clearance of 150m x 10.96m (AOD)

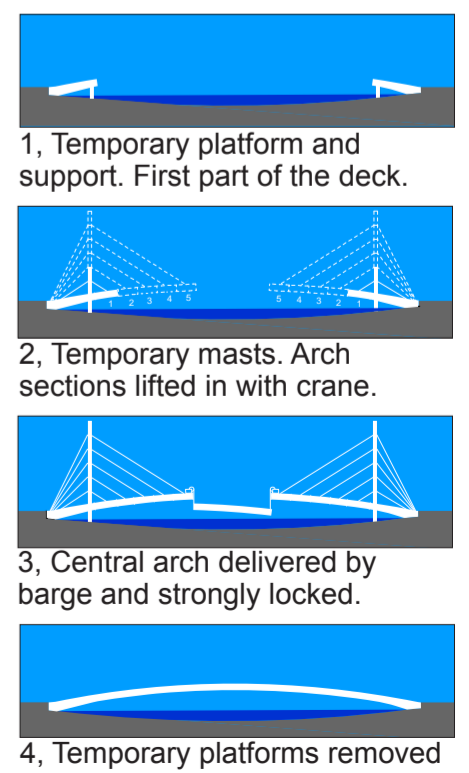
### Flexibility



The direction and curvature rate of the arc in both the horizontal and vertical directions, as well as the bridge length and width, can be flexibly adjusted for the specific site and conditions.

Challenge 4: Adaptable design

### Construction Methodology



Challenge 3: phased construction to ensure that river traffic can continue.



## RAINBOW PLACE

### **Bridge as a Plaza**

We would like to propose a plaza that floats in the air above the Thames.

It is a simple-shaped new type of plaza that can accommodate any manner of activities.

We specifically plan a stair-like bridge that widely forms an elegant circular arch both in its plan and in its elevation.

There are no supporting columns in this bridge. None of the structure will be built in the river, and its beautiful curvature passes straight through above the Thames. Its demeanor is like that of a rainbow that stretches across the river. It will serve not only as a means of transportation, but will also inhabit the role of a plaza as a space where people can spend their day sitting and gazing at the river. As well as fulfilling its role as a bridge, RAINBOW PLACE will be a main plaza for this area that is undergoing a process of renewal.

### **Bridge as a Theatre**

In creating a stair-like space that draws an arch like a rainbow, we expect to achieve a centripetal effect akin to an open-air theatre whilst simultaneously leading people's eyes and their interest to the flow of the Thames. In this respect, this place embodies a multitude of possibilities for holding various events.

For instance, when an art festival takes place on the Thames, this space can become a large theatre through closing off cyclist traffic. Additionally, it will be possible to host an array of performances on the bridge.

### **Bridge as a Landscape**

In contrast to existing bridges that merely show the upstream and downstream of the river at the same time, in RAINBOW PLACE people can witness the distant view that reveals itself as one gradually ascends the stairs. Furthermore, when people reach the top, an epic view unravels before the eyes on the other side of the bridge, giving the same spectacular sensation of reaching the peak of a mountain. This bridge enables people to see the view of London from different levels, and we believe that it will further inhabit the role of an observatory that hovers above the Thames.

### **Bridge as a Sculpture**

The tilted arch serves to create two distinct impressions of this bridge within the scenery. On one side it reveals its impression as a plaza in which people are sitting and gathering around the stairs. From the other side, the people gathered in the space are concealed and cannot be seen. Only the opposite exterior surface of the bridge can be seen, presenting the appearance of a beautiful sculpture that draws a rainbow-like dynamic arch across the river.

RAINBOW PLACE is a beautiful scenery that is conceived through an elegant rainbow-like curvature and the current of the river Thames. Through the numerous overlaying of such elements, we believe that RAINBOW PLACE will be a new monument of London in its own right whilst simultaneously integrating itself into the beautiful, historical view of the Thames riverside.