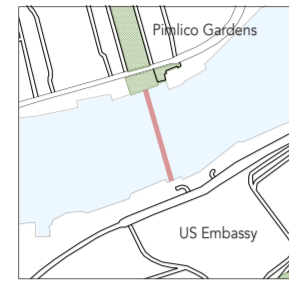


The design challenges itself to be more than just an efficient connection between two banks, but to be a human-centric solution that makes everyday life better. We achieve this by being obsessed with the experiential needs of the commuting individual. This has resulted in a scheme with touchpoints that amplify the inherent joys of both fast and slow navigation. Our deepest desire is that the people of the surrounding areas will benefit from a design that everyone can enjoy through the human scale of "The Verse Bridge".



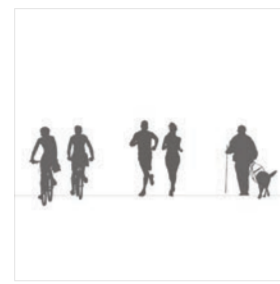
ITS CITY

The bridge is an urban furniture that is in sync with the future green corridor planning.



ITS NEIGHBOURHOOD

Sensitive response to the scale of buildings and character of neighbourhoods.



ITS USERS

Caters to commuters travelling at different speeds and creating new social experiences.

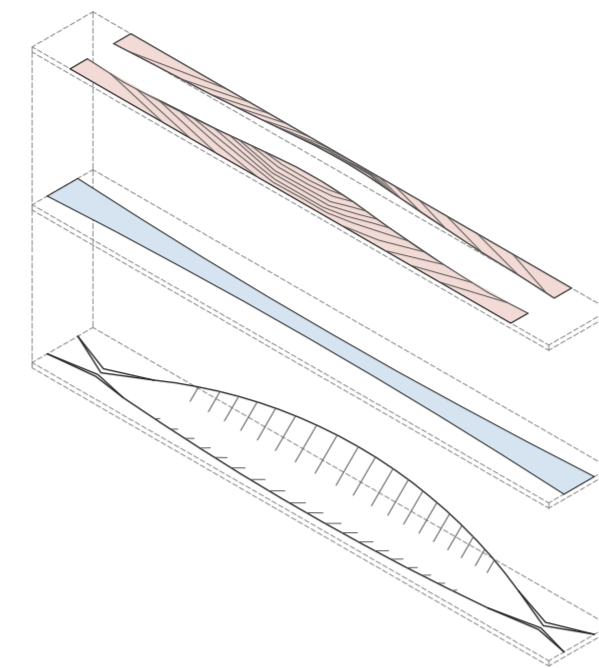
## VOICES OF THE PEOPLE

Here is a snapshot of the people we have interviewed in the vicinity, capturing quotes regarding key needs that influenced our design.

PEDESTRIANS	<p><i>"My favourite bridges are those who offer a sense of safety... where I don't have to constantly watch my back."</i></p>	<p><i>"It's nice to have an additional experience, not just crossing."</i></p>	<p><i>"We live here... It's just the idea of so many people coming through here that will disrupt the peace of this area."</i></p>	<p><i>"It's like no one thinks about the winds when they build a bridge! It's really cold! Because of that you see people quickly crossing."</i></p>
CYCLIST	<p><i>"When I can get out of the way of vehicles and pedestrians, it feels safe and liberating."</i></p>	<p><i>"You'd want to avoid bottlenecks. You'd want to feel like it's easy to get in and out of traffic."</i></p>	<p><i>"I like the many use a bridge has. It's a place to stop and enjoy, as well as a means of crossing, of motion."</i></p>	<p><i>"It's nice to have bridges from which you can enjoy the view; they are like a treat from the journey almost."</i></p>

## SPATIAL TRANSLATION

Crafting layers of the bridge to cater to the unique needs of different users based on their firsthand feedback.

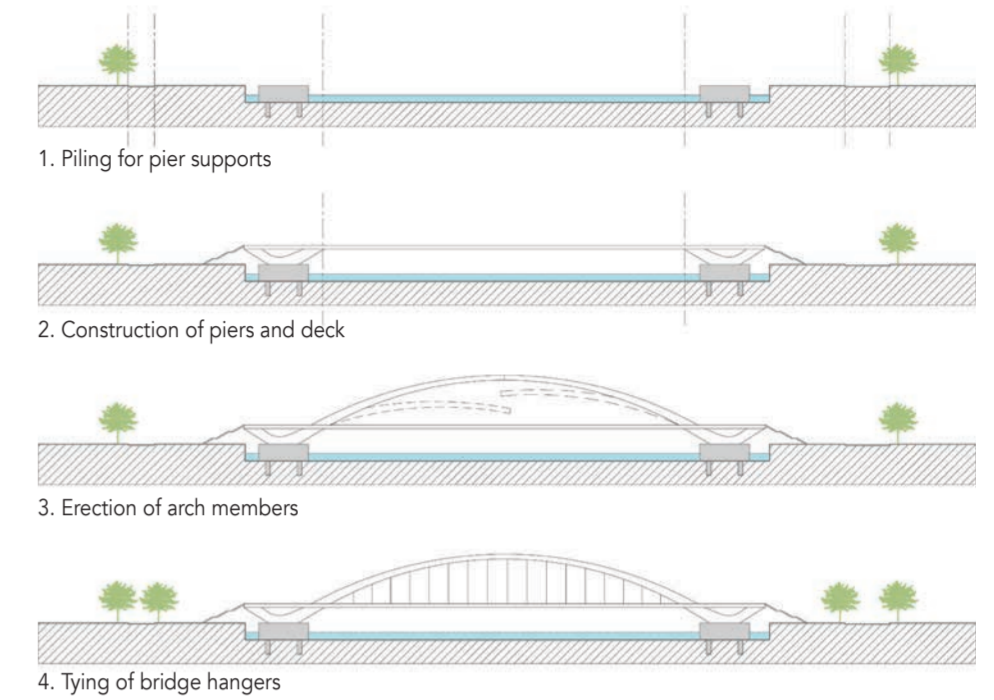


PEDESTRIANS

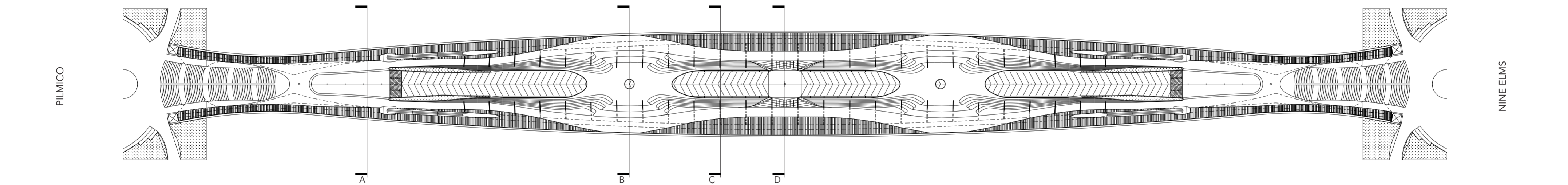
CYCLIST

STRUCTURE

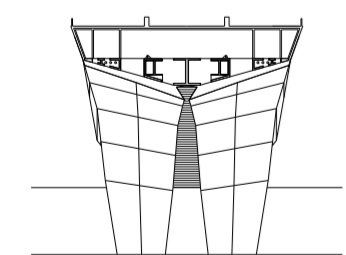
## CONSTRUCTION PHASES



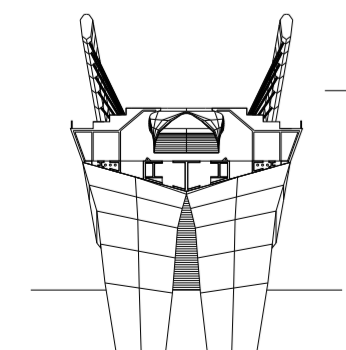
<p><b>TRAFFIC / SAFETY</b> Slight elevation before "no bike zone" to prevent accidents between cyclists and pedestrians</p>	<p><b>UNIVERSAL DESIGN</b> Lifts and walkways for the disabled and elderly.</p>	<p><b>TRAFFIC / SAFETY</b> Clear graphics and colours on the floor indicative of lanes and traffic direction</p>	<p><b>EXPERIENCE</b> Opportunities for people to meet, linger or simply enjoy the view.</p>	<p><b>WIND CONDITIONS</b> Shelter from strong winds</p>	<p><b>VIEWS</b> Enjoy views from different levels.</p>	<p><b>CHOICE</b> Accommodating different paces of users.</p>	<p><b>TRAFFIC (EXIT)</b> Dedicated lanes for incoming and outgoing traffic</p>
---	---	--	---	---	--	--	--



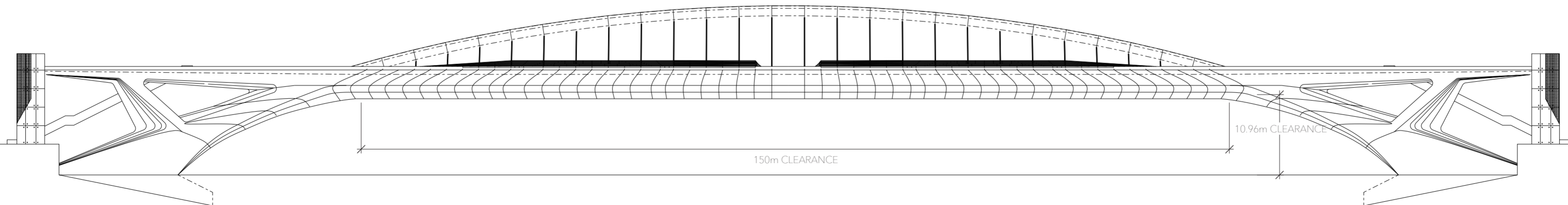
<p><b>TRAFFIC</b> Wheeling ramps in the middle of stairs, reducing chances of congestion</p>	<p><b>CONVENIENCE</b> Bike escalator to assist upslope.</p>	<p><b>CONVENIENCE</b> Straight paths for commuters</p>	<p><b>WIND CONDITIONS</b> Shelter from strong winds.</p>	<p><b>EXPERIENCE</b> Bike parkings provided, giving the option of dismounting midway.</p>	<p><b>VIEWS</b> 1. Openings along the sides for views of river</p>	<p><b>VIEWS</b> 2. Down the tunnel and towards sky.</p>	<p><b>LIGHTING</b> To enhance urban nightscape and user experience</p>
--	---	--	--	---	--	---	--



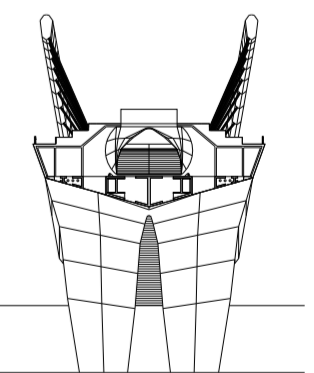
SECTION A, SCALE 1:500



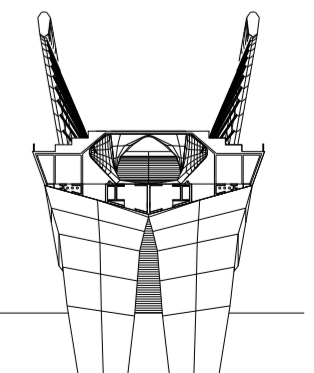
SECTION B, SCALE 1:500



ELEVATION, SCALE 1:500



SECTION C, SCALE 1:500



SECTION D, SCALE 1:500

